

## REVAMPED LTL SHIPPING PROCESSES SAVE TIME AND MONEY



A small business that manufactures upscale televisions and specialty mirrors needed more visibility into shipping processes and assistance following up on claims.

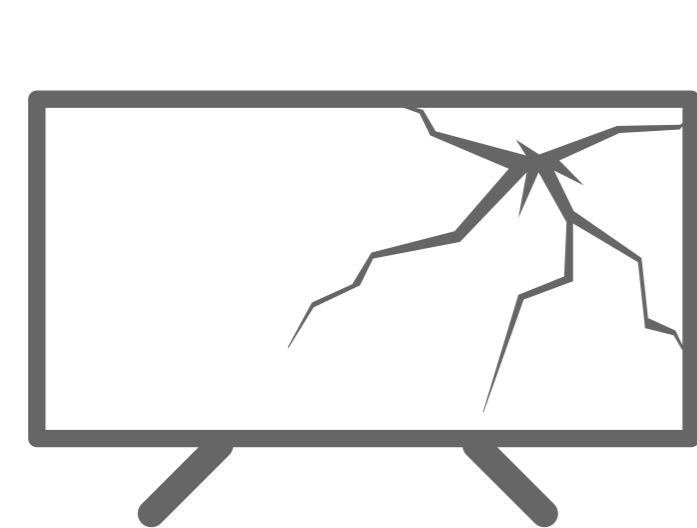
### THE SITUATION



Manufacturer had little insight into LTL shipping patterns



Without shipping data, manufacturer couldn't find opportunities for improvement



No shipment data to reference created a claims black hole



Employees didn't understand LTL shipping process

### THE SCHNEIDER SOLUTION



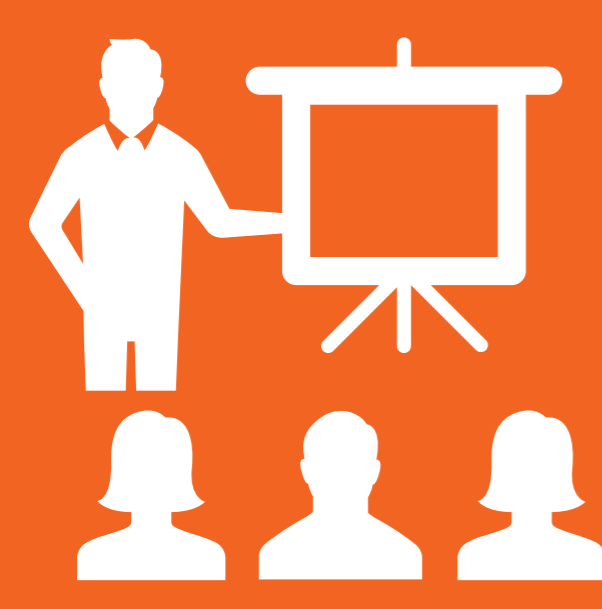
Negotiated a single rate for regional and national carriers



KPI reporting provided data to help follow up on claims



OrangeHub powered by Schneider enabled manufacturer to track LTL shipments



Provided best-in-class training for loading and shipping products

### THE RESULTS

SHIPMENT VISIBILITY ENABLED

# 100%

CLAIMS COLLECTION

### KPI REPORTING



IS INFORMING  
SMART FUTURE  
SHIPPING DECISIONS

UP TO  
**15%** SAVINGS  
ON SHIPPING

ON-TIME DELIVERY RATE  
INCREASED FROM

**90%**  **98%**

Schneider established efficient and cost-effective processes to help the small manufacturer ship its LTL freight like a pro. With regular reporting and analysis from the experts at Schneider, the manufacturer has a new, higher standard for service.

Let us roll up our sleeves and dig into your toughest LTL challenges. Contact us today.

[OrangeHub.Schneider.com](https://www.OrangeHub.Schneider.com)